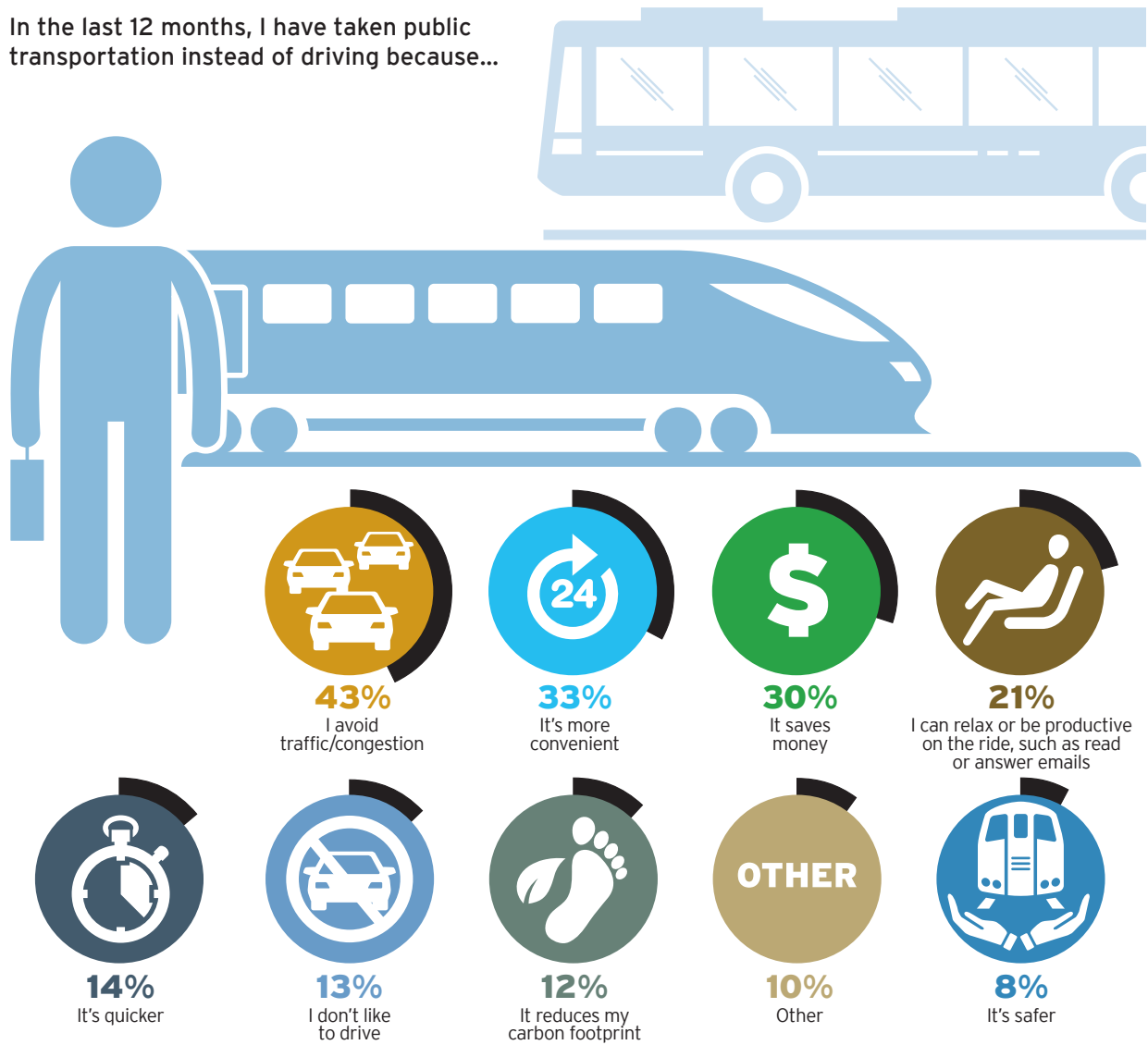


**CONGESTION, CONVENIENCE AND COST DRIVE USE
OF PUBLIC TRANSPORTATION IN PHILADELPHIA REGION**

Public transportation, and especially rail transit, is integral to people living in the metropolitan area. They rely on it for choice of mobility options and convenient access for travel within Philadelphia and to and from the suburbs. With access to public transportation as an alternative, residents can avoid traffic congestion and save money.

IN THE REGION, PUBLIC TRANSPORTATION IS THE MOBILITY OPTION OF CHOICE

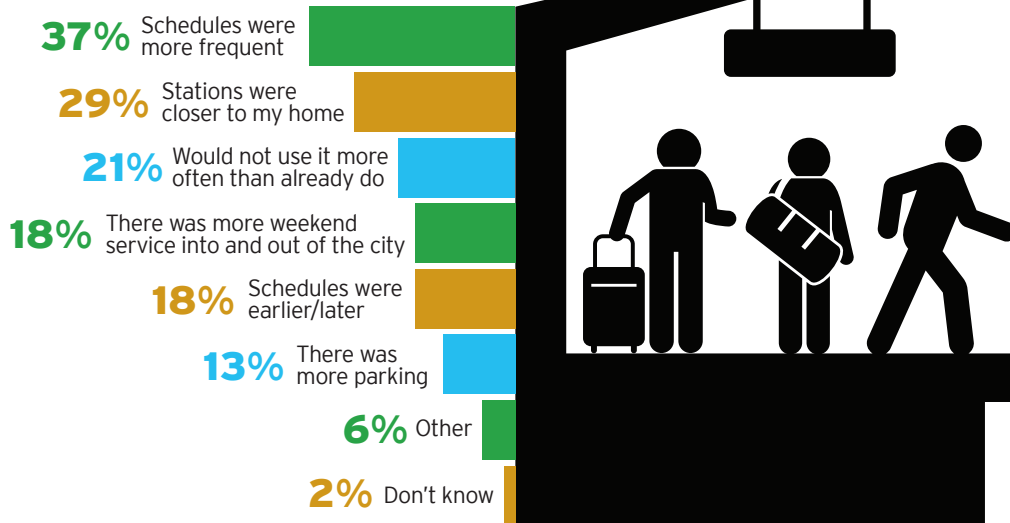
In the last 12 months, I have taken public transportation instead of driving because...



Public transportation impacts millennials more than any other segment of Philadelphia's regional population. It affects decisions about where they choose to live (72 percent) and willingness to pay a higher rent or mortgage (68 percent). In the past five years, interest in living near public transportation has increased 52 percent among the region's millennials.

WHILE USAGE OF PUBLIC TRANSPORTATION IN GREATER PHILADELPHIA IS RELATIVELY HIGH, PEOPLE COULD BE ENCOURAGED TO USE IT MORE FREQUENTLY

Seventy-six percent of people in the Philadelphia region would use public transportation more often if ...



Almost 9 in ten millennials (87 percent) expressed an interest in using a ride-sharing service to travel to and from their homes to public transportation services versus 56 percent of all respondents.

HNTB'S America THINKS "Public Transportation in the Philadelphia Region-2017" survey was conducted between March 24 and March 27, 2017. It polled a random sample of 1068 adults from Bucks, Chester, Delaware, Montgomery and Philadelphia counties in Pennsylvania, and Burlington and Camden counties in New Jersey. It was conducted by Russell Research, which used an email invitation to an online survey. Quotas were set to ensure reliable representation of the Philadelphia region's population ages 18 and over. The margin of error is +/- 3.0 percent.